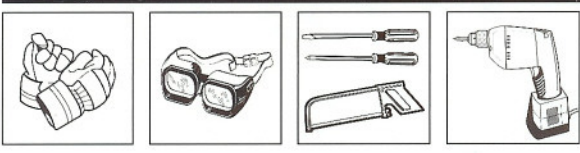
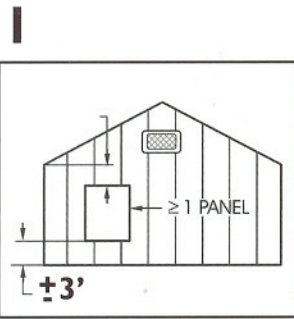


# WINDOW ASSEMBLY INSTRUCTIONS

## TOOLS NEEDED

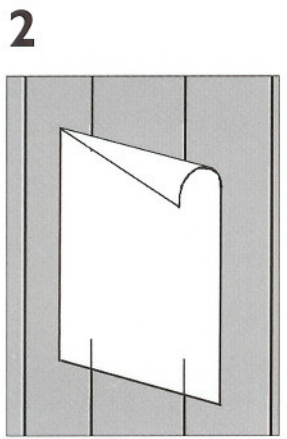
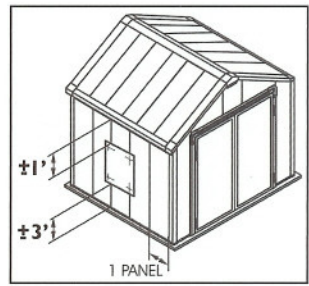


Handsaw, jigsaw or router #2, Phillips screwdriver, Drill and 3/8" drill bit, Gloves, Safety goggles, Utility knife

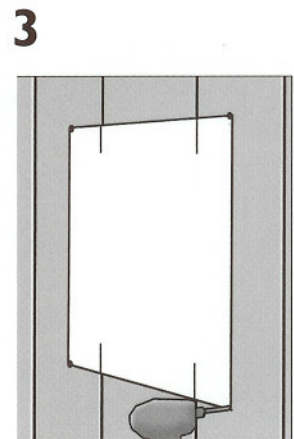


While selecting location for your window please be aware that the following should be taken into account:

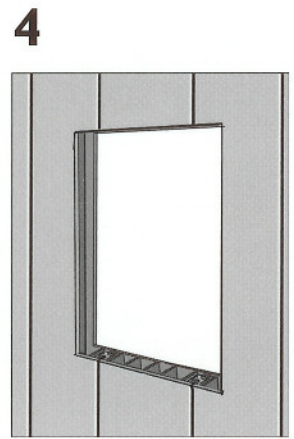
- a) Place the window at a location that is at least 6" away from the top and bottom of your shed.
- b) Place the window at a location that is at least one panel away from corner.
- c) Place the window at a location that is at least one panel away from door and vent.



Once you've selected the location of the window, place the window label accordingly. Please place the label markings upon the connectors that are between the panels.



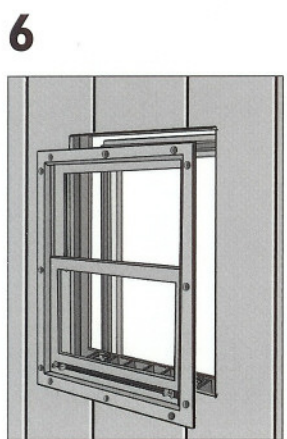
Drill holes at all four corners. Use a handsaw, a jigsaw or a router to cut from corner to corner.



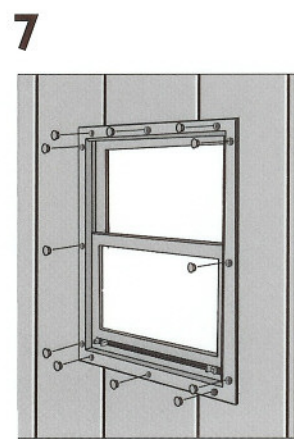
Upon completion remove the interior parts from the wall.



Undo the screws and separate the two window frames.



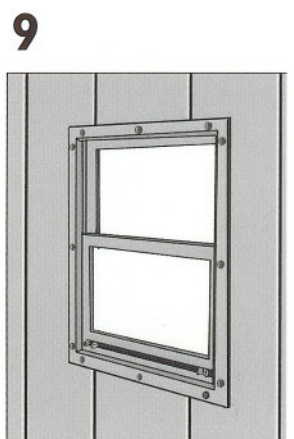
Place the frame without the holes facing the exterior part of the wall.



The frame with the holes, together with the glass, must be placed towards the interior part. Please make sure that the window does not move within the frame. Also, make sure that the



Use a screwdriver to tighten the screws diagonally.



Use the caps to cover the screws.